

Spud Barge Danny Boy



Marine Support Capabilities

Technical Specifications

Water Depths

| | |
|-----------------------|----|
| Max Water Depth (ft) | 10 |
| Design Air Gap (ft) | 0 |
| Min. Water Depth (ft) | 5 |

SPUDS

| | |
|-------------------------------|-----|
| Number of spuds | 2 |
| Length (ft) | 30 |
| Average spud Penetration (ft) | 3 |
| Pad Depth (ft) | N/A |

Hull Dimensions

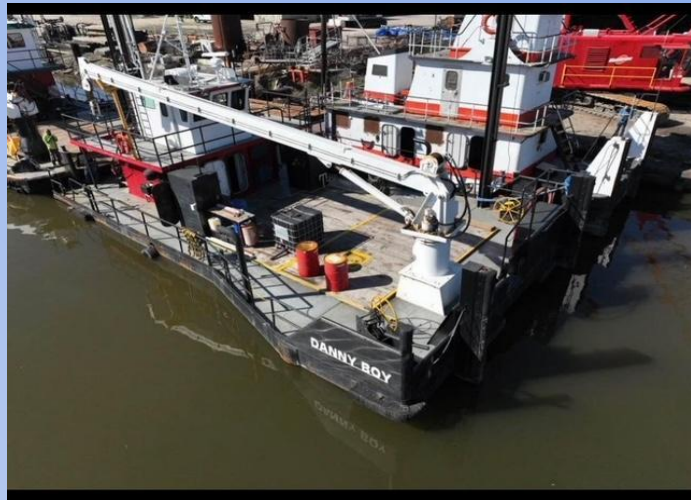
| | |
|-------------|----|
| Length (ft) | 50 |
| Width (ft) | 25 |
| Depth (ft) | 5 |

Deck Information

| | |
|---|-------|
| Usable Deck Area (sq. ft) | 500 |
| Max Fixed Load - Holding Capacity (lbs) | 25000 |
| Deck Load Pressure | |
| Length (ft) | 25 |
| Width (ft) | 20 |

General Information

| | |
|--------|-------|
| Crane | 5 ton |
| Boom | 50 ft |
| Berths | 2 |



Danny Boy Official Number 1206681

Main Engine Specification

| | |
|---|---------|
| Number of Engines | 2 |
| Make | Detroit |
| Model | 871 |
| Estimated Speed (knots) | 5 |
| Fuel Consumption Per Engine (gallon per hour) | |

Generator Specifications

| | |
|----------------------|-------|
| Number of Generators | 1 |
| Engine Manufacturer | Isuzu |
| Engine Model | 24KW |

Capacities

| | |
|-------------------------|------|
| Fuel (gallons) | 3200 |
| Fresh Water (gallons) | 6000 |
| Hydraulic Oil (gallons) | 50 |